



GAT MONTHLY MEMBERSHIP PROGRESS REPORT

Results as of: 11/30/2021

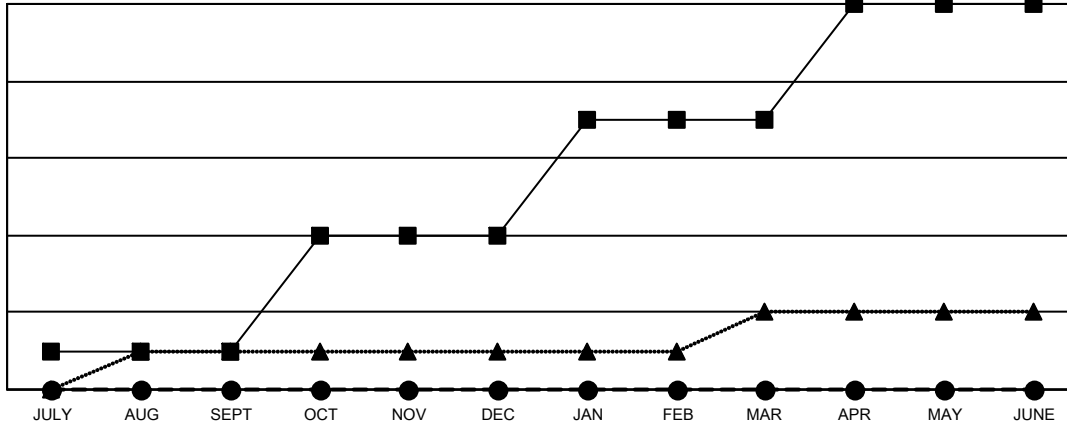
Multiple District 33

LOCATION: MASSACHUSETTS

Clubs			
RESULTS FOR 2021-2022			
QUARTER	NEW CLUB GOAL	NEW CLUBS	DROPPED CLUBS
JULY/AUG/SEPT	1	0	1
OCT/NOV/DEC	3	0	0
JAN/FEB/MAR	3	0	0
APR/MAY/JUNE	3	0	0

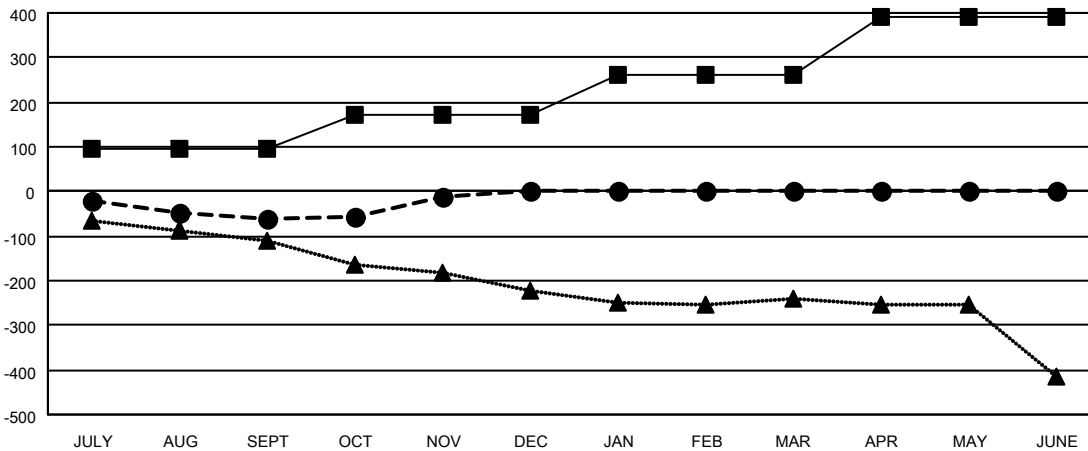
Members			
RESULTS FOR 2021-2022			
QUARTER	MEMBER GROWTH NET GOAL	MEMBER GROWTH ACTUAL	DROPPED MEMBERS ACTUAL (including transfers)
JULY/AUG/SEPT	95	81	128
OCT/NOV/DEC	75	134	74
JAN/FEB/MAR	90	0	0
APR/MAY/JUNE	130	0	0

GOALS AND ACTUAL NEW CLUBS CUMULATIVE



- CURRENT YEAR GOALS FOR NEW CLUBS
- CURRENT YEAR ACTUAL NEW CLUBS
- ▲- LAST YEAR ACTUAL NEW CLUBS

GOALS AND ACTUAL MEMBERS CUMULATIVE



- MEMBER GROWTH NET GOAL
- MEMBER GROWTH ACTUAL
- ▲- LAST YEAR MEMBERSHIP ACTUAL

DROPPED CLUBS: 1	70 CLUBS OF 215 ADDED 1 OR MORE NEW MEMBERS	GENDER DISTRIBUTION
DROPPED MEMBERS	CLICK HERE FOR CUMULATIVE MEMBERSHIP DATA	MALE 4,120 (63.51%)
DECEASED 46		FEMALE 2,365 (36.46%)
CLUB CANCELLED 0		NON BINARY 0 (0.00%)
OTHER 156		PREFER NOT TO ANSWER 2 (0.03%)
TOTAL 202		TOTAL FAMILY UNIT MEMBERS 1,065
		FAMILY MEMBERS PAYING HALF DUES 542